

PLEATED MASK

WITH OPTIONAL NOSE STRIP



BY LINDA SADOWSKI

TOOLS:

- Fabric scissors or cutting wheel and mat
- Pins or clips
- Ruler
- Thread
- Iron
- Sewing machine
- (optional) SMART donated metal nose strip or pipe cleaner

MATERIALS:

- 2 pieces of 100% cotton, preferably two different colors, each 9" wide and 7" high
- 2 pieces of ¼" wide elastic, each 7" in length

PLEATED MASK WITH OPTIONAL NOSE STRIP



STEP ONE

Cut 2 rectangles 9" wide and 7" high. Use 2 different colored fabrics if possible, to make it easy for the wearer to differentiate the the inside from the outside.



STEP TWO

On the right side of the outside layer of fabric, pin the elastic pieces in place.



STEP THREE

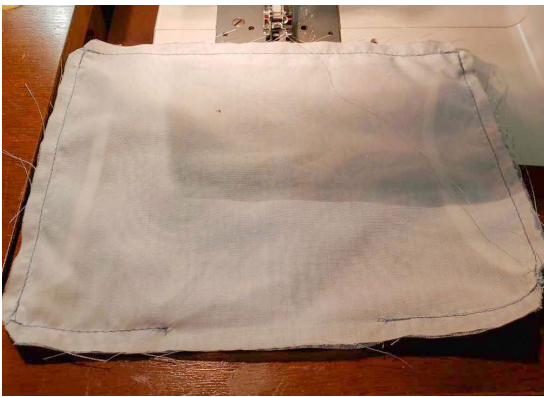
Stitch down the elastic pieces close to the edges along each side, approximately 1/2" from the top and bottom.

PLEATED MASK WITH OPTIONAL NOSE STRIP



STEP FOUR

Place right sides of both pieces of fabric together.



STEP FIVE

Stitch along sides with a $\frac{3}{8}$ " seam allowance, leaving a 3" opening at the bottom which will be used to turn the mask right side out.

Back stitch at the start and end of the stitching, at the corners, and over the elastic as you're sewing around the mask to secure it. Clip corners carefully, not cutting through the stitching that forms the corners.



STEP SIX

Turn the mask right side out and use a finger or blunt tool to shape out the corners from the inside.



Press the seams.

PLEATED MASK WITH OPTIONAL NOSE STRIP



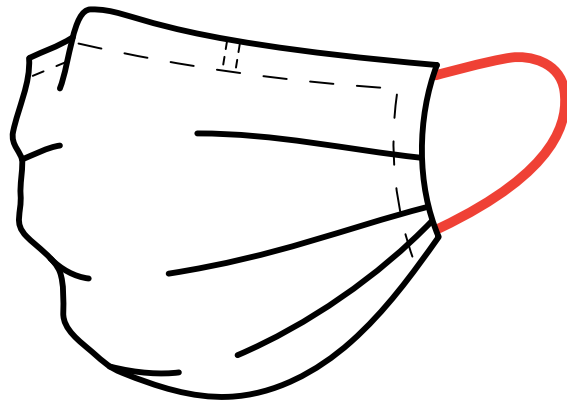
STEP SEVEN

Fold up 3 pleats on each side of mask, all folded in the same direction. Pin or clip them into place.



STEP EIGHT

- * Top stitch around the entire mask, securing the pleats and closing the bottom opening.
- * If planning to insert a nose piece within the allowance, leave enough room when top stitching across the top of the mask. (The top seam should be approximately 1/8" wider than the nose piece.)



PLEATED MASK WITH OPTIONAL NOSE STRIP

SMART Local 18, International Association of Sheet Metal, Air, Rail and Transportation Workers have donated metal nose strips to Union Mask Brigade sewers across Wisconsin.

HOW TO ADD THE SMART STRIP TO THE FINISHED MASK:

When originally topstitching the mask, sew along the top edge of the mask approximately $\frac{1}{8}$ " farther from top edge than the width of the nose strip.



STEP ONE

Place SMART Strip (or pipe cleaner) lengthwise on the top center of the mask and mark approximately $\frac{1}{4}$ " beyond each side, so that markings are wider apart than the width of the SMART Strip. At one of the markings, cut a small opening in the top layer only of the fabric, just big enough to slide the SMART Strip in.



STEP TWO

Slide the SMART Strip in and push it over far enough so that the needle doesn't hit it when bar tacking over the slit where the SMART Strip was inserted.



STEP THREE

Bar tack several times over the slit in the top of the mask to close it up, using a zig zag stitch with a short stitch length—or using a wide buttonhole stitch. Then slide the SMART Strip back over toward the first bar tacking and repeat the bar tack on the the other side, taking care not to hit the SMART Strip with the needle.



This will keep the SMART Strip in the center of the top of the mask.